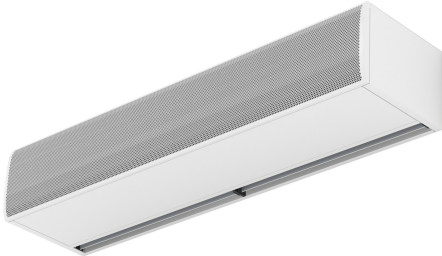




## Karakteristike

Vazdušna zavesa napravljena za specijalnu primenu u slučajevima ekstremne hladnoće i/ili vlage i/ili korozivnih uslova. KOOL je kompaktna vazdušna zavesa malih dimenzija sa bezvremenskim dizajnom prijatnim za oko. Zahvaljujući dizajnu vazdušnog ispusta, KOOL vazdušna zavesa osigurava nisku turbulenciju i visoku brzinu vazdušne mlaznice, pa je omogućeno efikasno razdvajanje prostora sa visokim temperaturnim razlikama.



- Specially recommended in applications with extrem cold and/or humidity and/or corrosion conditions.
- Self-supporting casing construction made of galvanized steel plate, finished in structural epoxy-polyester painting white colour RAL9016 as standard. Other colours or stainless steel are available on request.
- Large faceted inlet grille avoiding intensive maintenance. Also available with flat micro-perforated inlet grille, more elegant for commercial doors where heating is not needed.
- Anodized aluminium outlet vanes, airfoil shaped, adjustable from 0 to 15° each side.
- Double-inlet centrifugal fans driven by an external rotor motor and low noise level with special IP55 protection made by: sealed bearings, encapsulate stator and wire sealed with silicone. 5-speed selector.
- Includes IP55 waterproof case for electronic components and transformer and all wire connections, including IP68 press releases.
- IMPORTANT: The electronic and transformer waterproof case cannot be assembled inside the air curtain. The customer should look for a place outside the air curtain. The dimensions of this case are 170x225x150mm.
- Includes Plug&Play control with 7m RJ45 cable and infrared remote control.  
Optional: Clever control (programmable, automatic, intelligent, energy saving, Modbus RTU for BMS...)

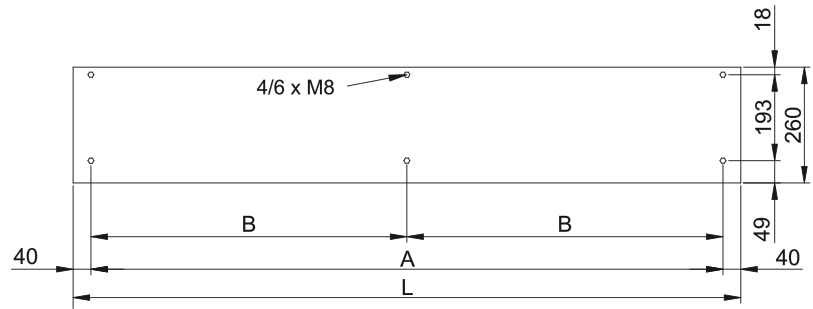
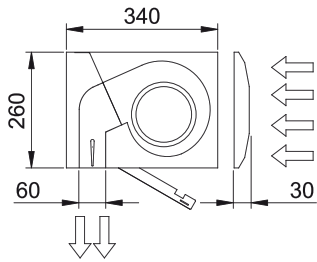
## Specifikacije

50Hz

| Model          | Negrejano                          |                                       |
|----------------|------------------------------------|---------------------------------------|
|                | Nominalni protok vazduha<br>(m³/h) | Preporučena Visina Instalacije<br>(m) |
| KM 1000 A IP55 | 1700                               | 2,5-3,5                               |
| KM 1500 A IP55 | 2550                               | 2,5-3,5                               |
| KM 2000 A IP55 | 3400                               | 2,5-3,5                               |
| KM 2500 A IP55 | 4250                               | 2,5-3,5                               |
| KM 3000 A IP55 | 5100                               | 2,5-3,5                               |
| KG 1000 A IP55 | 2400                               | 3-4                                   |
| KG 1500 A IP55 | 3200                               | 3-4                                   |
| KG 2000 A IP55 | 4800                               | 3-4                                   |
| KG 2500 A IP55 | 5600                               | 3-4                                   |
| KG 3000 A IP55 | 6400                               | 3-4                                   |



Dimenzije



| L    | A    | B    |
|------|------|------|
| 1000 | 920  | -    |
| 1500 | 1420 | 710  |
| 2000 | 1920 | 960  |
| 2500 | 2420 | 1210 |
| 3000 | 2920 | 1460 |

